

Housings

for angular gears / T-gears

SPECIFICATION

Types

- Type **W**: Housing for angular gears
- Type **T**: Housing for T-gears

Aluminium gravity die casting

plastic coated

black, RAL 9005, textured finish **SW**

Thrust screws

Stainless Steel



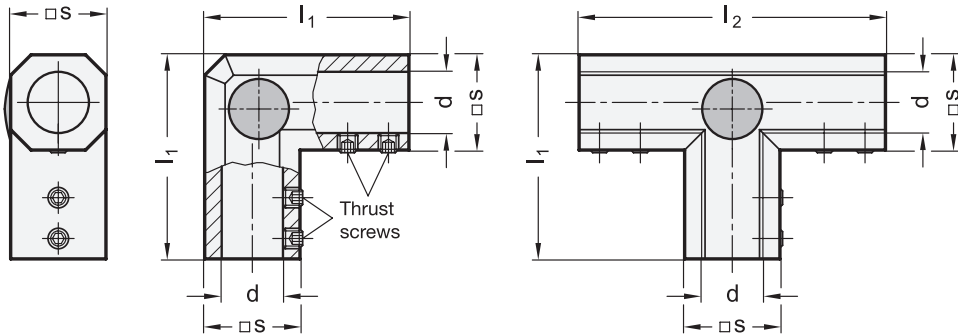
INFORMATION

Housings GN 298 for angular / T-gears are used in connection with bevel gear wheels GN 297 (see page 1942) and linear actuators / transfer units. The angular / T-gears are designed to deflect the rotary movement of a linear actuator / transfer unit by 90°.

An operating instruction with more details and specifications is included with every delivery.

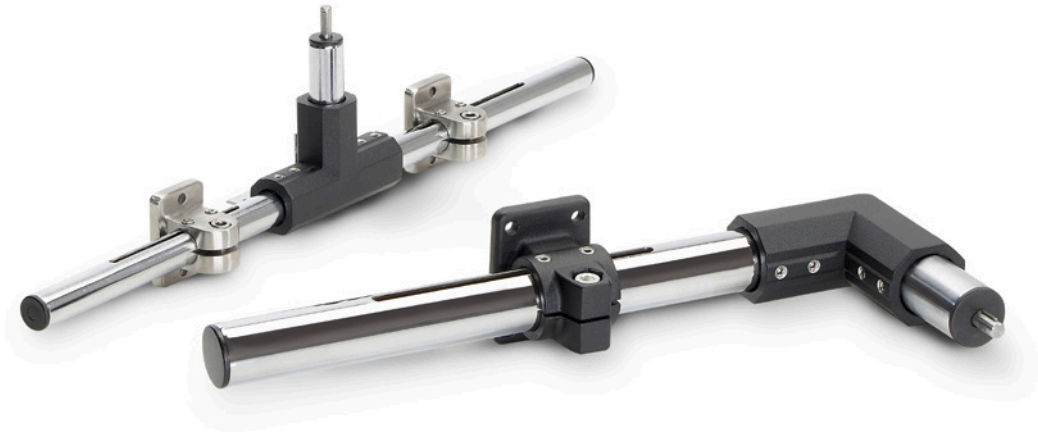
TECHNICAL INFORMATION

- Assembly and application examples of Transfer units (see page 1944)

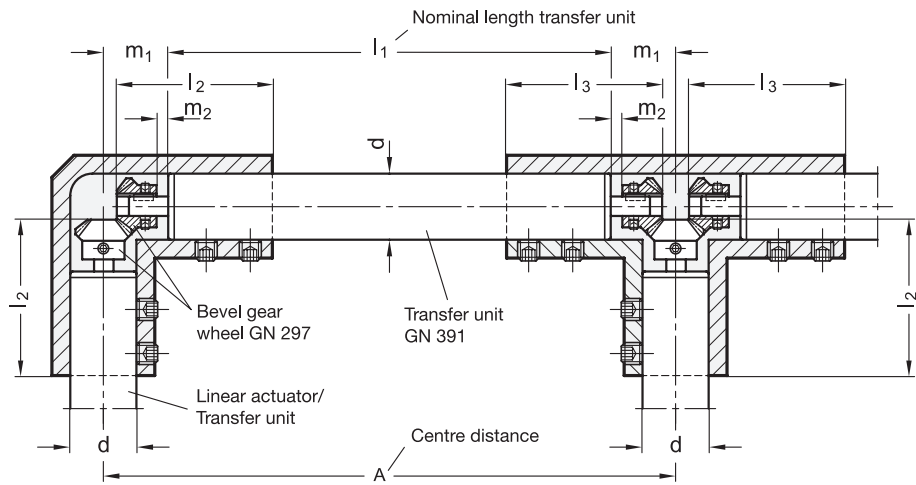


GN 298

Description	s	d	l1	l2	ΔΔ
GN 298-28-B18-W-SW	28	B 18	60	90	107
GN 298-40-B30-W-SW	40	B 30	84	126	240
GN 298-50-B40-W-SW	50	B 40	108	162	434
GN 298-60-B50-W-SW	60	B 50	128	190	700
GN 298-28-B18-T-SW	28	B 18	60	90	139
GN 298-40-B30-T-SW	40	B 30	84	126	280
GN 298-50-B40-T-SW	50	B 40	108	162	542
GN 298-60-B50-T-SW	60	B 50	128	190	851



ASSEMBLY OF LINEAR ACTUATORS AND TRANSFER UNITS WITH BEVEL GEAR WHEELS IN HOUSINGS GN 298



d Ø Linear actuator / transfer unit	l2	l3	m1	m2	Bevel gear wheel	Housing	Length of the transfer unit GN 391: $l_1 = A - 2 \times m_1$
18	41	40	20	4	GN 297-17.5-K6	GN 298-28-B18-W/T-SW	
30	58	57	26	1	GN 297-26-K8	GN 298-40-B30-W/T-SW	
40	75.5	73.5	32	1	GN 297-35-K12	GN 298-50-B40-W/T-SW	
50	90.5	87.5	32	1	GN 297-35-K12	GN 298-60-B50-W/T-SW	

